



After the Rain





Photograph of Living Room & Deck

After the Rain is strategically located just a 15 minute drive from Hebbal as well as the Bangalore International Airport.

The project comprises our V30 and V50 4 bedroom villas. Each handcrafted courtyard home is set under a blanket of earth, keeping the home cooler in summer and warmer in winter. Each home has been cleverly designed to appear low and inviting like single level homes from the outside, while being spacious two-level homes from the inside with tons of natural light.

We have tried to perfect our homes over time to provide a sense of warmth, privacy, openness and tranquillity in an increasingly stressful world. Almost every space opens out onto a landscaped garden, complete with a sprinkler system and drip irrigation system, and large glass panels bring in natural light into the home.

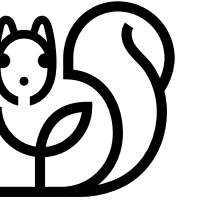
Amenities in the project include a clubhouse with a well-equipped gym, swimming pool along with a toddler's pool, children's play area and a multipurpose hall.

Our commitment to quality extends well beyond the customization and delivery of your home. We assume responsibility for property maintenance which includes a comprehensive slew of services that ensure competent and timely care of your home.






# Master Plan

## Phase I



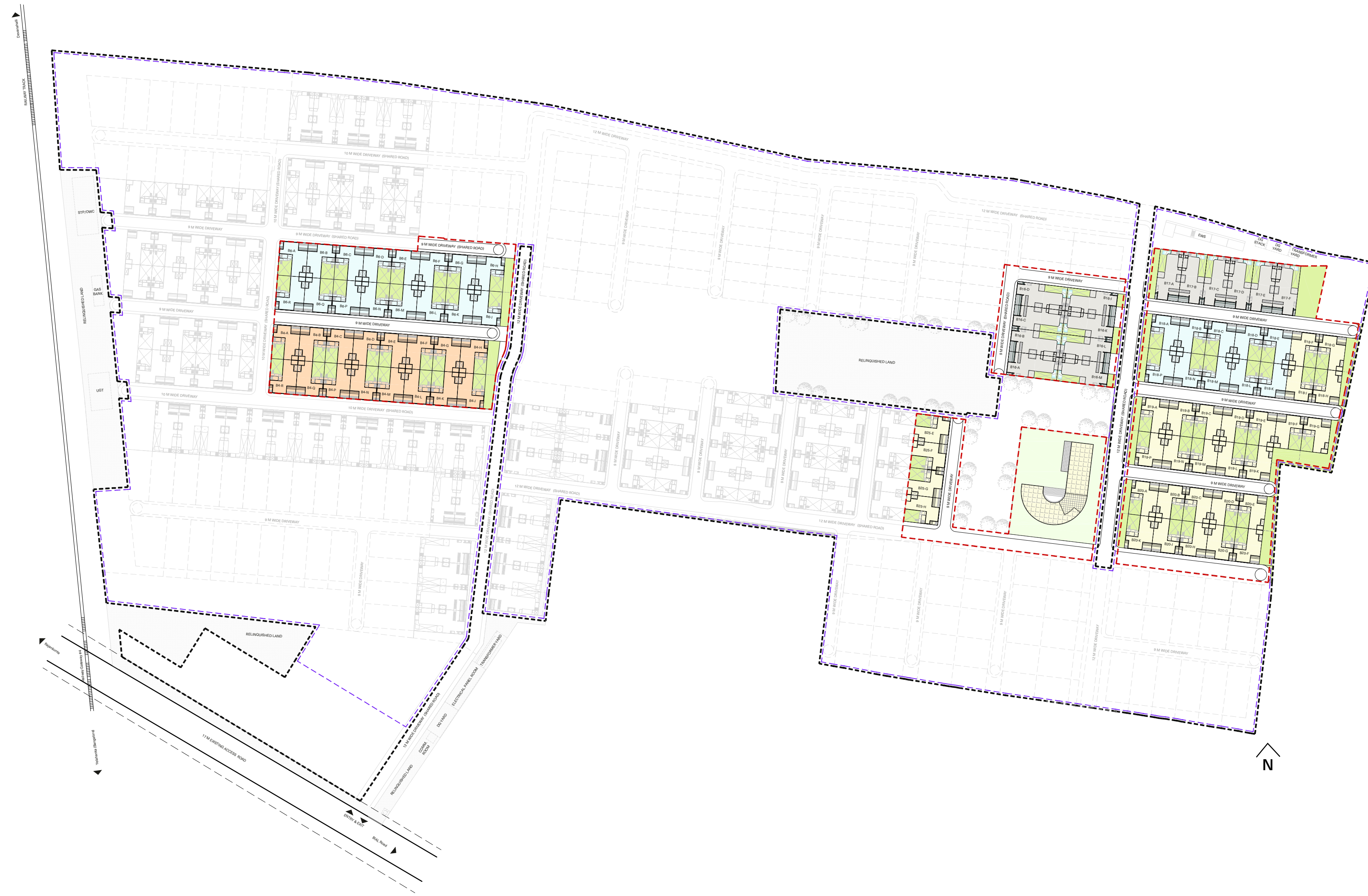
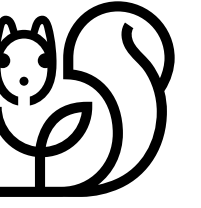
### Legend

-  V30v1a
-  V30v1b
-  V30v1c
-  V50v1a

-  Master Development Land
-  Residential Land
-  Project Land




# Master Plan

## Phase IIa



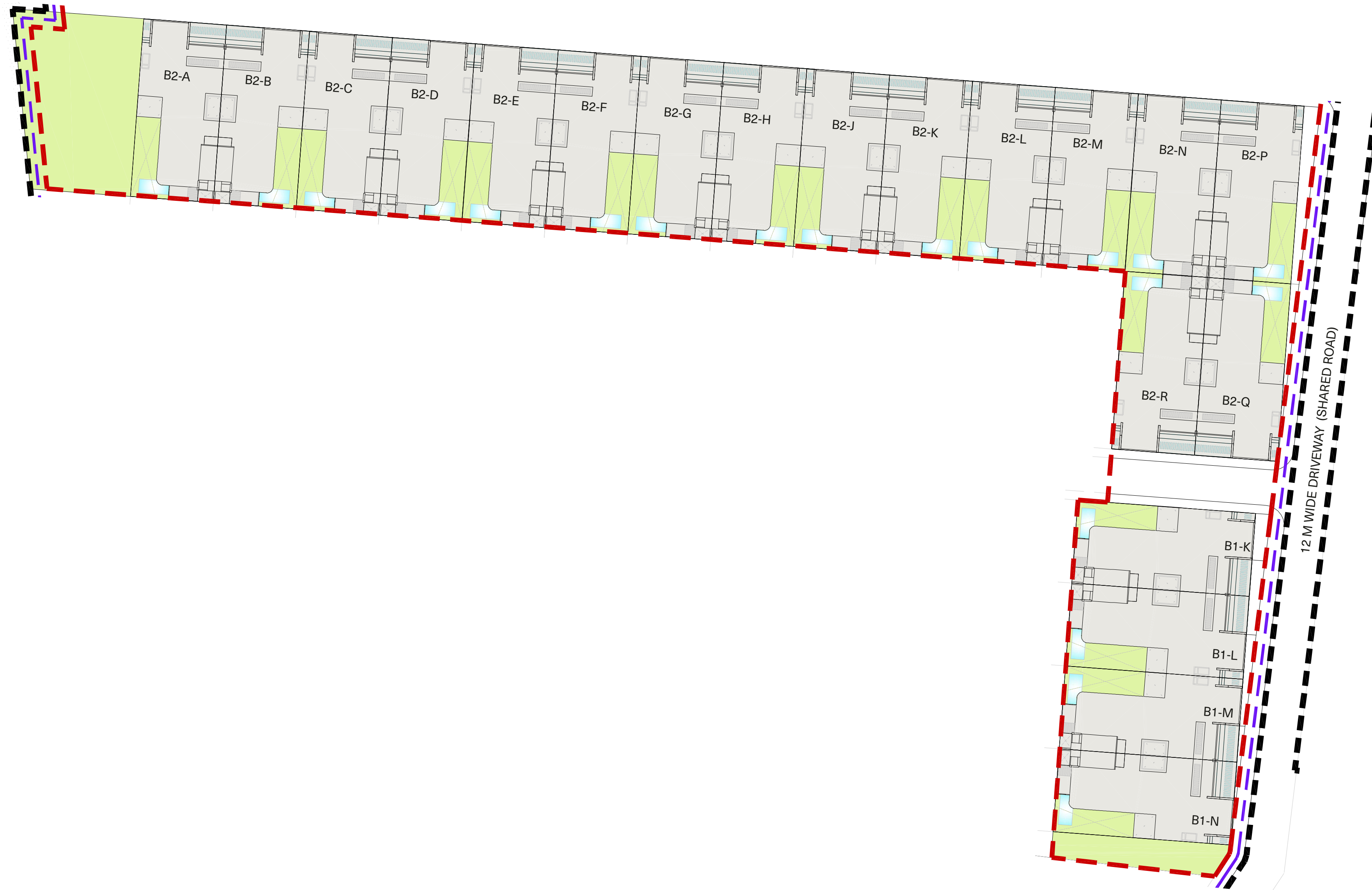
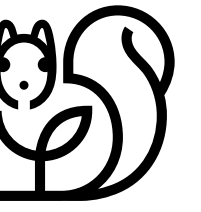
### Legend

-  V30v1a
-  V30v1b
-  V30v1d
-  V50v1a

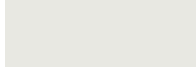



-  Master Development Land
-  Residential Land
-  Project Land

# Block 1 & 2

## Phase I

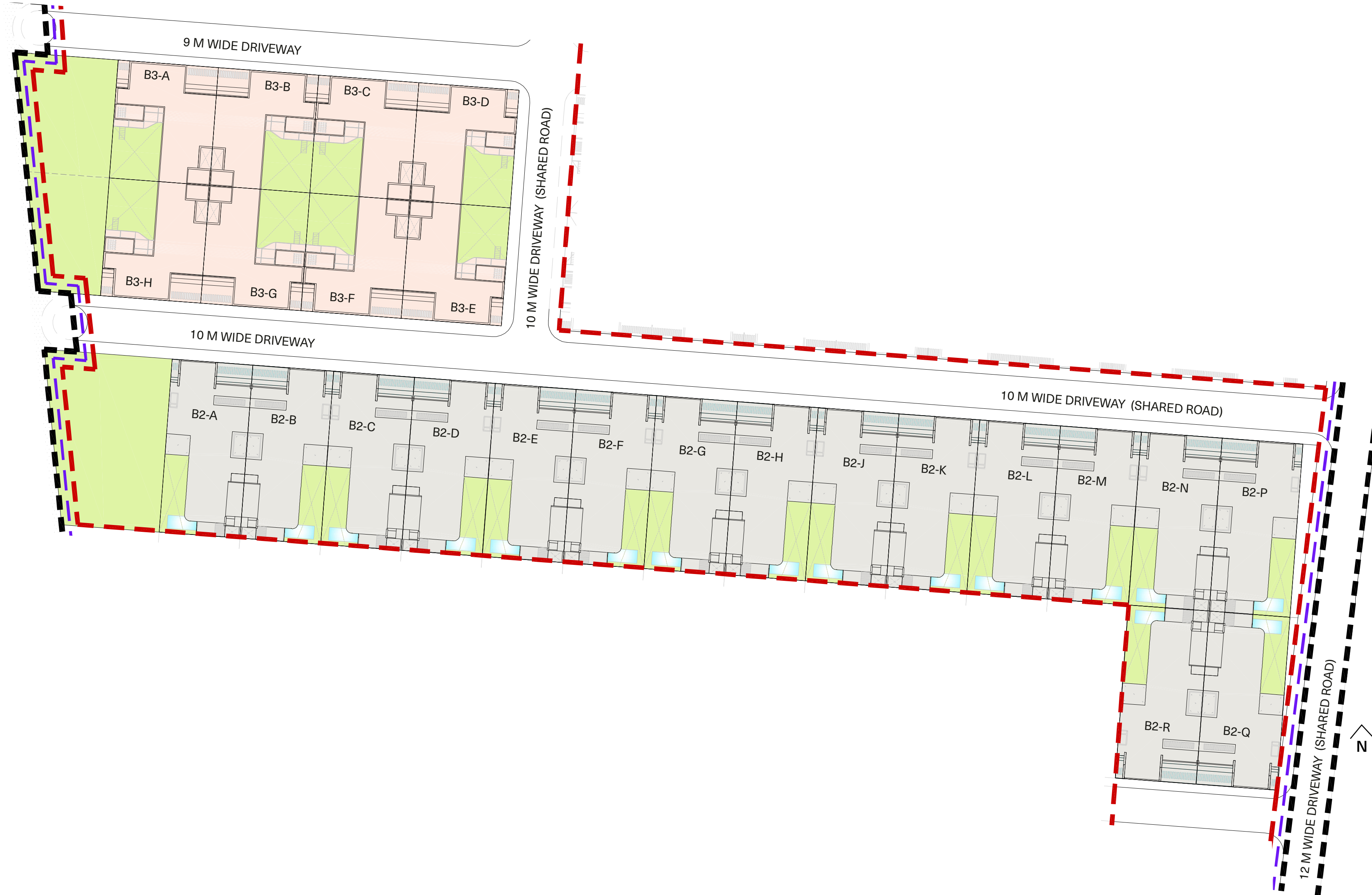
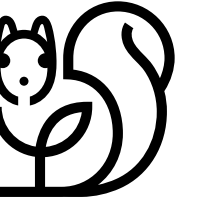


### Legend

-  V50v1a
-  Master Development Land
-  Residential Land
-  Project Land

# Block 2 & 3

## Phase I



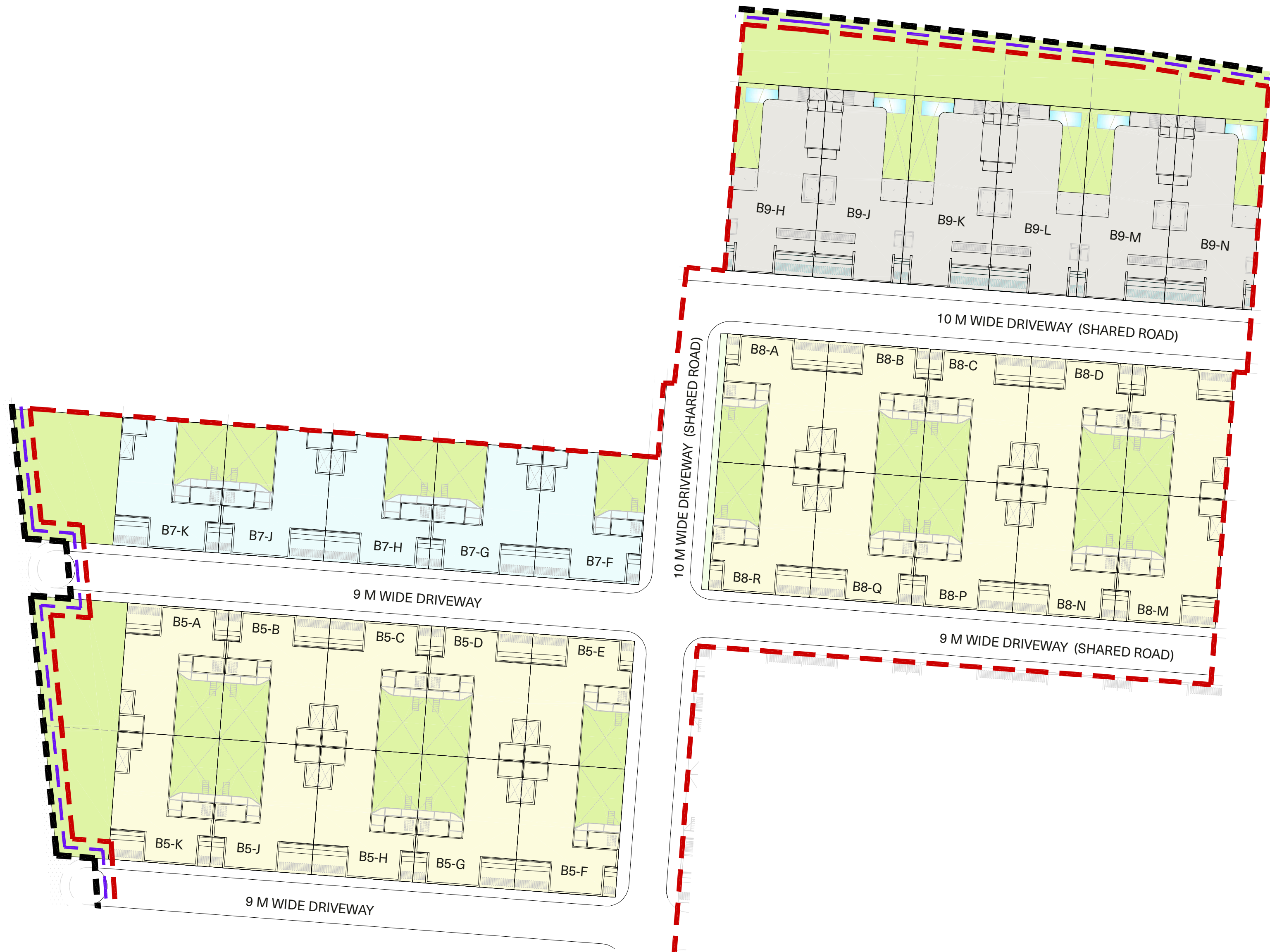
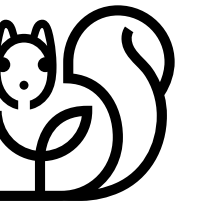
### Legend

-  V30v1c
-  V50v1a
-  Master Development Land
-  Residential Land
-  Project Land

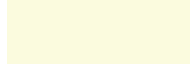
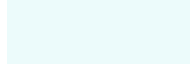
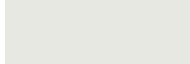





# Block 5, 7, 8 & 9

## Phase I

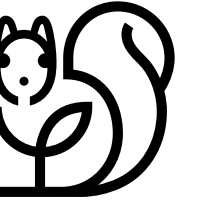


### Legend

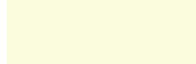
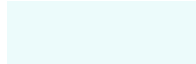
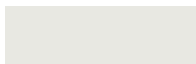



-  V30v1a
-  V30v1b
-  V50v1a
-  Master Development Land
-  Residential Land
-  Project Land

# Block 25, 27, 29, 31 & 33

## Phase I



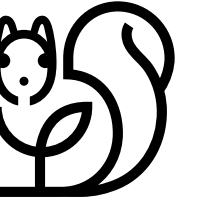
### Legend

-  V30v1a
-  V30v1b
-  V50v1a
-  Master Development Land
-  Residential Land
-  Project Land

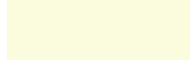
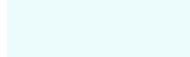
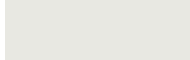





# Block 29, 31, 33 & 34

## Phase I

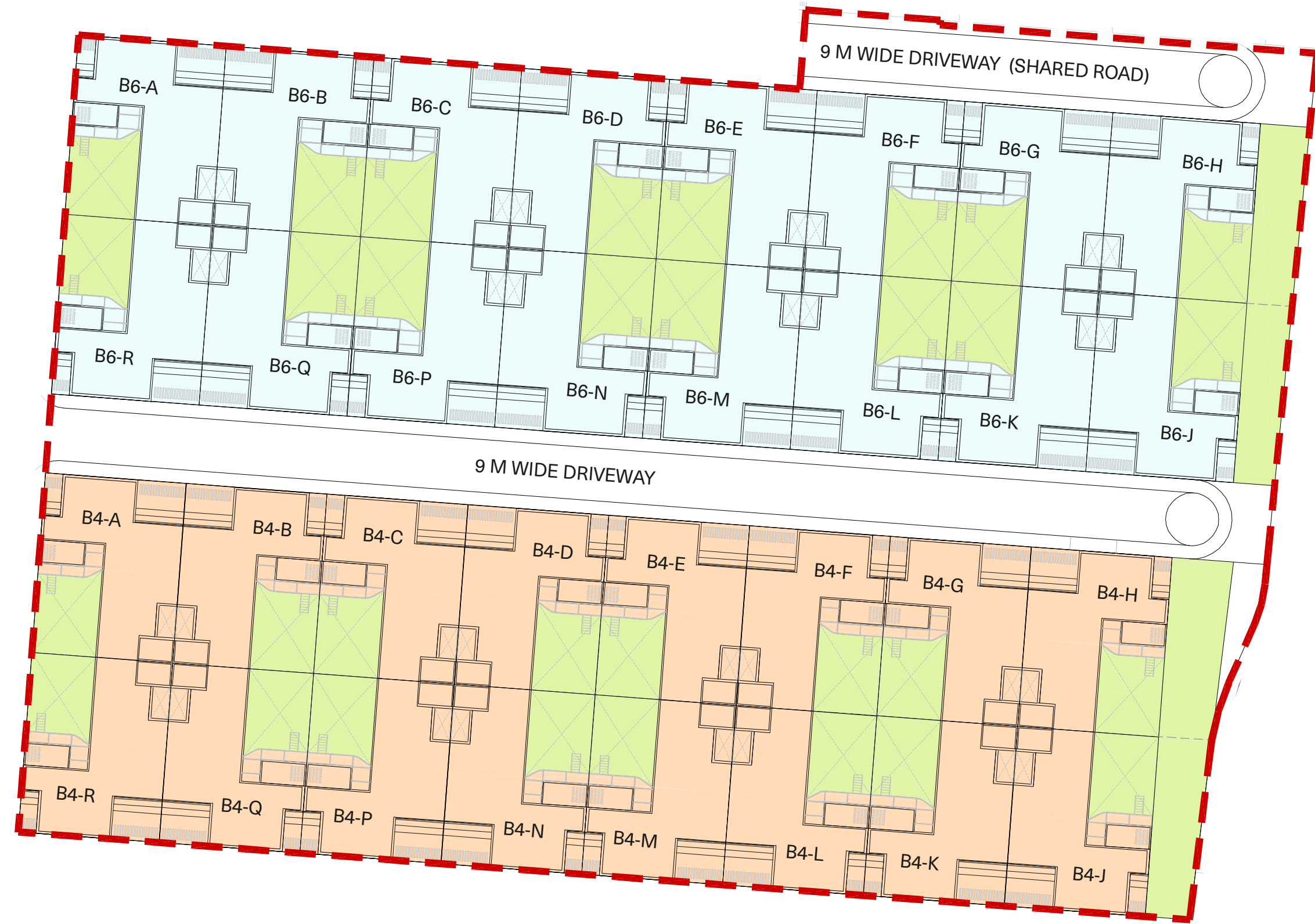
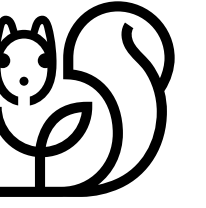


### Legend

-  V30v1a
-  V30v1b
-  V50v1a
-  Master Development Land
-  Residential Land
-  Project Land

# Block 4 & 6

## Phase IIa

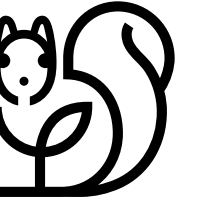


### Legend

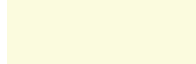
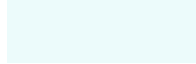
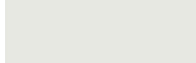



-  V30v1b
-  V30v1d
-  Master Development Land
-  Residential Land
-  Project Land

# Block 16, 17, 18 & 19

## Phase IIa

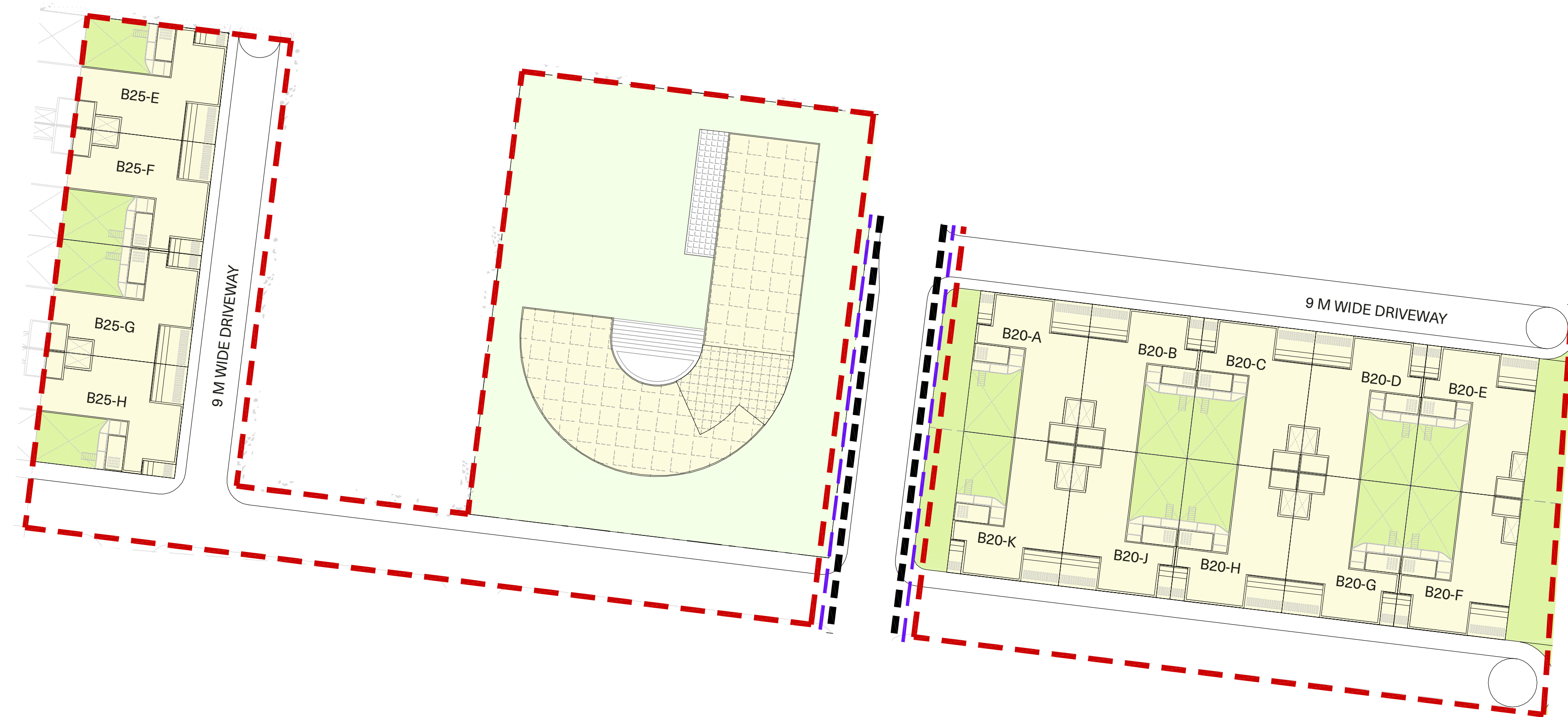
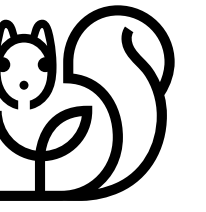


### Legend

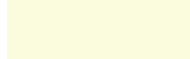



-  V30v1a
-  V30v1b
-  V50v1a
-  Master Development Land
-  Residential Land
-  Project Land

# Block 20 & 25

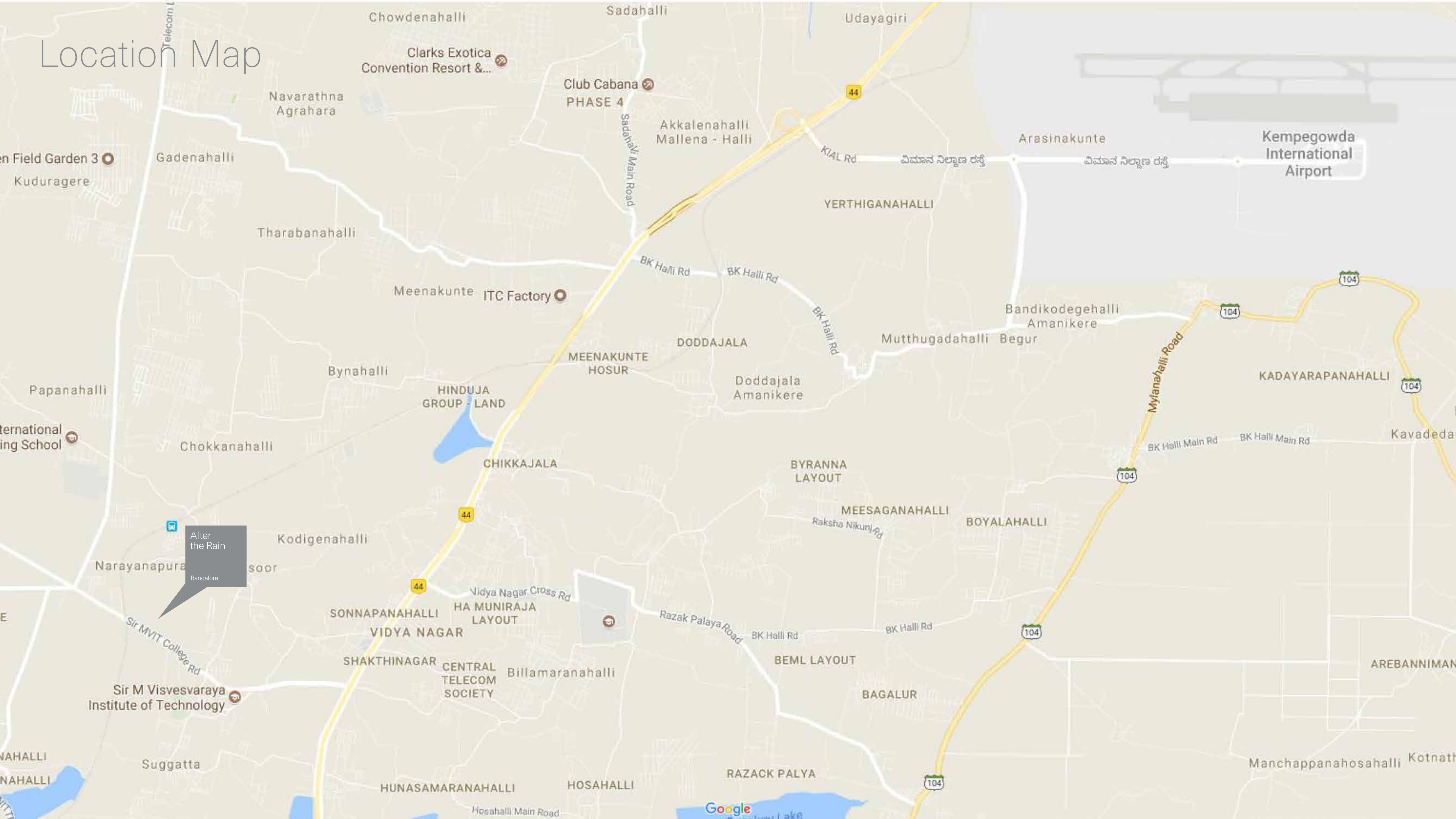
## Phase IIa



### Legend

-  V30v1a
-  Master Development Land
-  Residential Land
-  Project Land

# Location Map



# Amenities



Gymnasium



Children's Play Area

## Phase I

- Gymnasium
- Multi-purpose Hall
- Children's Play Area

## Phase IIa

- Swimming Pool
- Gymnasium
- Multi-purpose Hall
- Children's Play Area



Swimming Pool



# Fact File

After  
the Rain

Bangalore

## Project

Master Development Land Area	209963 sqm
Residential Development Land Area	203357 sqm
Project Land Area - Phase I	51028 sqm
Project Land Area - Phase IIa	44991 sqm
Total Number of Units in Residential Development	331
Number of Units in Project - Phase I	96
Number of Units in Project - Phase IIa	86
Available Products	V30v1a, V30v1b, V30v1c, V30v1d, V50v1a
Approvals Obtained	BDA, MOEF, WATER NOC FROM PANCHAYAT, POLLUTION CONTROL BOARD, RAILWAY NOC
RERA Registration Number - Phase I	PRM/KA/RERA/1251/309/PR/171014/000483
RERA Registration Number - Phase II	PRM/KA/RERA/1251/309/PR/180519/001763
Completion Date for Project - Phase I	June 2019
Completion Date for Project - Phase IIa	December 2022

## Location

Distance from CBD [Km]	23 Kms to Vidhana Soudha
Distance from Airport [Km]	17 km to BIA
Nearest Hospital [Km]	15 kms to Columbia Asia - Hebbal
Nearest Good School [Km]	2 km to Stonehill International School
Nearest Upmarket Mall [Km]	23 km to Orion Mall
Nearest 5 Star Hotel [Km]	16 km to Taj Kial



Photograph of Living Room, Kitchen & Deck





**Come, discover our homes.**

To book an exclusive tour of our Experience Homes mail us at [discover@total-environment.com](mailto:discover@total-environment.com)

[www.total-environment.com](http://www.total-environment.com)

**Total**Environment  
Homes